



## FOBA DP30FGS

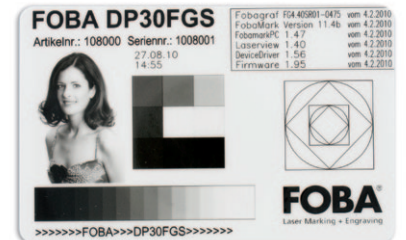
*Fiber laser marker for grayscale marking*  
*What security looks like: Gray with every fiber*

FOBA DP30FGS was developed for high-security marking applications in identification (ID), authentication and personalization. The 30W grayscale fiber laser marks sensitive and security documents (ID cards, smart cards, bank cards, badges, driver's licenses, passports) counterfeit-proof, accurate and fast. DP30FGS applies all industry-wide stipulated contents both in best marking quality and in high-resolution: be it owner-related data, graphics, photos, logos, 2D codes, Multiple Laser Images (MLI), Changeable Laser Images (CLI) or tactile markings.

In the end, sensitive documents are prepared to meet strict worldwide safety requirements, and are protected against misuse and counterfeit. This is what security means. And this is how security feels like: simply safe.

### Your product benefits

- Absolutely counterfeit-proof
- Maximum marking quality and easy setup
- More flexibility
- 30 % lower operating costs at up to 10 % more productivity



Laser marked ID cards with exemplary marking contents

## FOBA DP30FGS

### Technical Data

#### Marking features

<b>Speed*</b>	Up to 5,000 mm/s
<b>Formats</b>	Owner-related data/ Photos, graphics, logos/ 2D codes/ Multiple Laser Images (MLI), Changeable Laser Images (CLI)/ Tactile Markings
<b>Line width</b>	In standard config. 70 µm (min. 50 µm)

#### Laser

<b>Type</b>	Ytterbium (Yb) fiber laser, 30 W, diode-pumped, wavelength 1,060–1,070 nm
<b>Laser class</b>	4 (acc. to DIN EN 60825-1:2008-05)
<b>Power (QS)</b>	Typ. 21 W, max. 25 W
<b>Power stability</b>	+/- 2.5%
<b>Operating mode</b>	Q-switched (QS, 10 kHz–200 kHz)
<b>Pulse energy</b>	Typ. 0.60 mJ (50 kHz)
<b>Pulse power</b>	Typ. 6 kW (50 kHz), max. 10 kW (50 kHz)

#### Control

<b>PC, OS</b>	Modular CompactPCI-PC, Windows XP
<b>Laser control</b>	Fobagrat with import functions for plt/ dwg/ dxf/ ai/ jpg/ tif/ pcx/ bmp, etc.
<b>Interfaces</b>	Serial, digital I/O, Ethernet, USB

#### Supply

<b>Electrical req.</b>	L/N/PE AC 100–240 V, 50/60 Hz
<b>Power consumption</b>	650 W (typ. 450 W)
<b>IP rating</b>	Marking unit IP54, control cabinet (with supply unit and laser control) IP43, OEM version IP00

#### Cooling

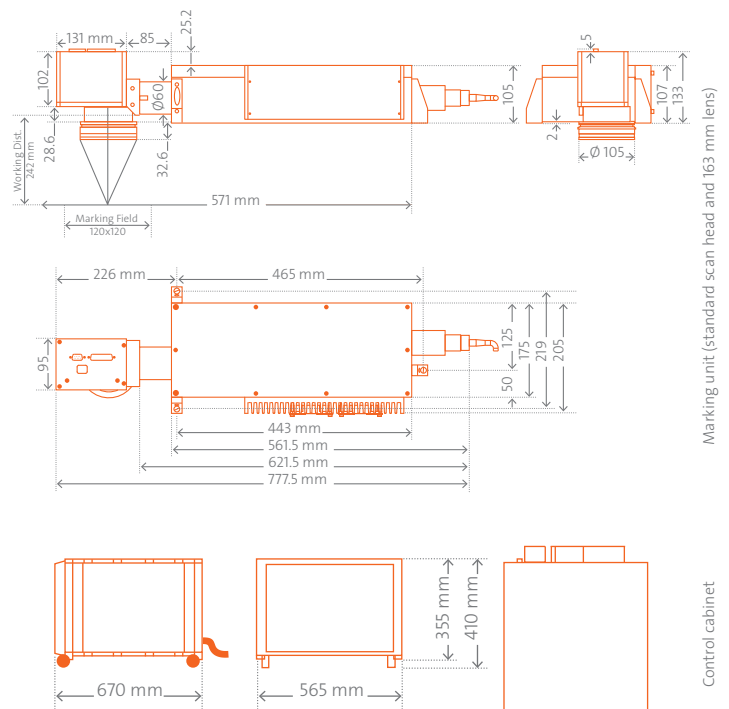
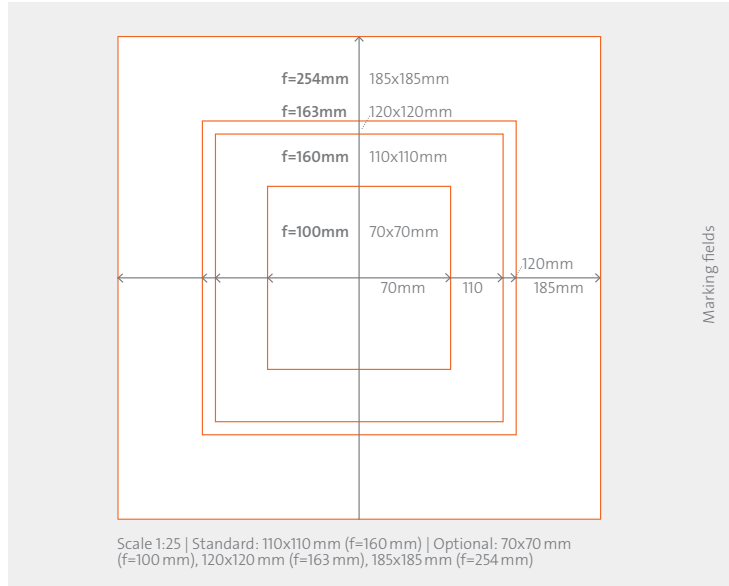
<b>Temperature**</b>	Air-cooled
<b>Humidity range</b>	15–32 °C (100% DC), 15–35 °C (50% DC) Rel. 90% (max. 20 °C), 30% (max. 40 °C)

#### Weight

Marking unit approx. 13 kg, control cabinet approx. 45 kg, OEM components approx. 30 kg

#### Options

Patented process for the tilt-free creation of Multiple Laser Images (MLI) + Changeable Laser Images (CLI)



\* depends on application \*\* DC = Duty Cycle

ALLTEC GmbH  
 Altenaer Straße 170 a  
 58513 Lüdenscheid | Germany  
 T +49 2351 996-0  
 F +49 2351 996-234  
 info@fobalaser.com | www.fobalaser.com

Your local agency

